



Botha Courts

Tennis | Netball | Padel

Est. 1992

**PREMIUM QUALITY
COURT SURFACES**

**WE DON'T JUST BUILD COURTS,
WE BUILD PARTICIPATION**

083 462 0209

www.bothacourts.co.za



PLAYER EXPERIENCE

Let's Play

Environment is everything

THE ENJOYMENT OF A TENNIS EXPERIENCE HINGES ON KEY FACTORS

ACCESSIBILITY

COURT LOCATION, POSITION AND SURROUNDINGS

COURT SURFACE AND FENCING

COSMETICS

READ OUR ULTIMATE PARTICIPATION
GUIDE FOR PLAYER EXPERIENCE FOR
AN IN DEPTH VIEW.



Background

Established in 1992, Bothacourts have been designing, constructing and resurfacing tennis courts and sports surfaces for decades.

A fourth generation tennis playing family, we understand the importance of the playing surface towards creating the ultimate player experience.

With a court history stretching nationwide the focus has predominantly been in the Free state with expansion planned in Gauteng from 2022.



Spin



Speed



Bounce



WHO ARE WE

Our Story

JOHAN BOTHA started playing tennis in the 1960's while still at primary school and excelled all the way to national level throughout his career. He extended his passion for tennis into court construction in 1990's when he started the construction of his own court which remains one of the most scenic courts in the Free State to this day. RUAN and LEHAN played tennis from early on and the family has been revolving around tennis to this day. Both joined BothaCourts in 2019 and now manage the business into the next generation.

Experience is key...



Lehan Botha

Director of Operations & Technical

For more than 20 years Lehan has honed his skills in predominantly the hospitality industry as chef and restaurantier. Having a specific affinity to the technical side involving recipes, logistics and product development he has added a new dimension since joining the court construction business.

Lehan manages operations and has recently developed a new surface coat with some of the leading scientists in the field that will soon roll out as the Bothacourts signature coat.

Recent years have shown that no activity or event can be successful without well planned and executed hospitality & customer services. Lehan has lead and been part of the planning, concept design, construction and operating of numerous events, restaurants, retail outlets and understand the importance of creating memorable experiences and flow of service. Many years in operations and business management makes Lehan well suited to lead Bothacourts into the next era of quality and service delivery.



BothaCourts
Tennis | Netball | Padel
Est. 1992

WHO ARE WE

Our Story

...when creating more than just a surface



Ruan Botha

Director of Sales & Customer Relations

Having spent more than 10 years in professional coaching and development of the top players in South African youth tennis very few people understand the key factors that make for great playing surfaces like him. His intricate knowledge of the National tennis systems and role players make him perfectly suited to engage with clients.

Ruan also knows that ultimate participation can only be achieved through optimum player experience. It's all about what players require to achieve and maximise their full potential. His role as performance coach for top provincial and national teams in recent years has allowed him to track performance across multiple sport disciplines including tennis, netball, cricket, rugby, etc. and in a variety of environments.

Ruan is a firm believer that environment is the number one determining factor for success and enjoyment in tennis and sport as a whole and assists clients with creating these environments to achieve higher participation and optimum performance.



BothaCourts
Tennis | Netball | Padel
Est. 1992

WHO ARE WE

Our Story

The Team

Our loyal crew with decades of experience

Our team knows exactly what is required to give our clients the ultimate Bothacourt experience. With some members having served in the team for more than 20 years their finely honed skills makes all the difference.



BothaCourts
Tennis | Netball | Padel
Est. 1992

OUR CLIENTS

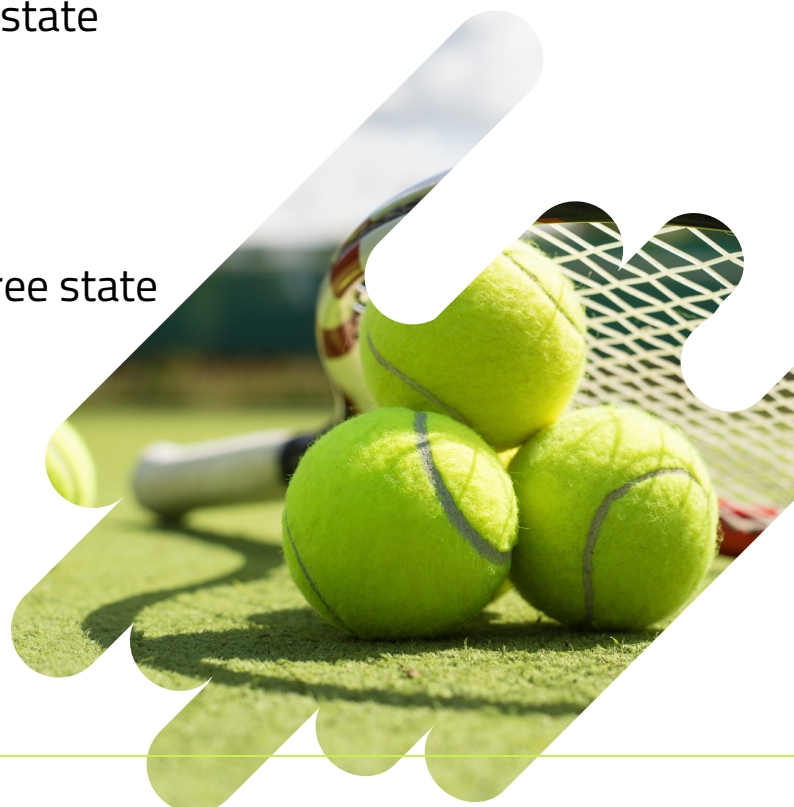
Our Clients

The people who trust us with their surfaces

Recently completed tennis and netball projects

- University of the Free State
- CUT Bloemfontein
- Grey College, Bloemfontein
- Eunice High School, Bloemfontein
- Hoerskool Wilgerivier, Frankfort
- Thys Botha, Bloemfontein
- Pholoho Special School, Bloemfontein
- Hoopstad Country Club, Free state
- Marks Park, Johannesburg
- Hertzogville, Free state
- Ladybrand Primary School, Free state

References available



Recently Completed

University Free State

9 Tennis, 6 Netball, 4 Basketball



CUT Bloemfontein

4 Netball



Hoërskool Wilgerivier

4 Netball



Private Tennis Court, BFN

1 Tennis



Eunice High School

2 Netball, 3 Tennis



Botha Courts
Tennis | Netball | Padel
Est. 1992

DOWN TO DETAIL

Our Courts



Compounded
aggregate
& asphalt base



BothaCourts
Tennis | Netball | Padel
Est. 1992

Our Courts



Top coats available
in various colours



BothaCourts
Tennis | Netball | Padel
Est. 1992

Our Courts



Tennis, Netball,
Basketball, Volleyball
and multi-purpose
court finishes

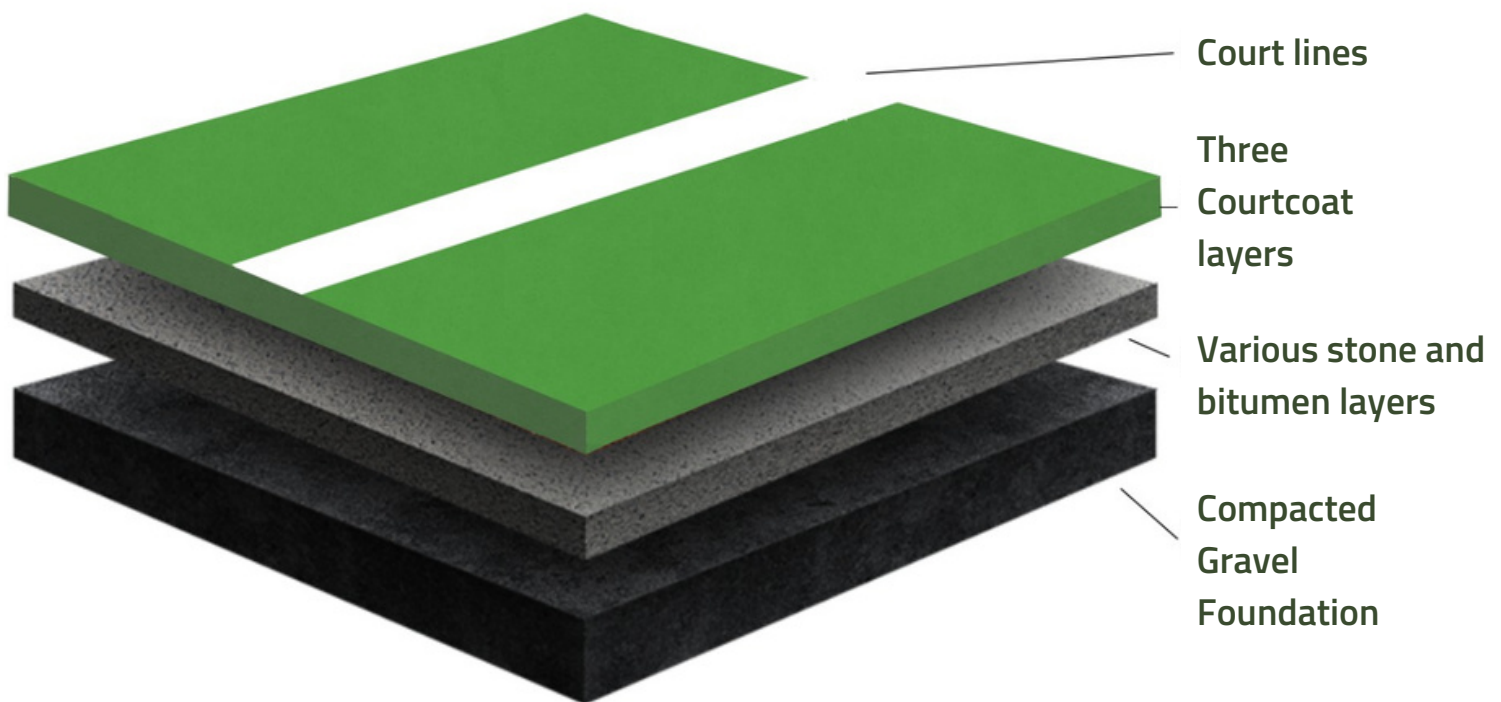


BothaCourts
Tennis | Netball | Padel
Est. 1992

Court Compilation

Our courts are constructed through a process of layering the required material to achieve the optimum density and playing surface.

New courts require a compacted layered base to ensure stability over time. Resurfacing is recommended every 4-5 years depending on use and weather conditions and generally apply to the three court coat top layers.



...It's all about the base

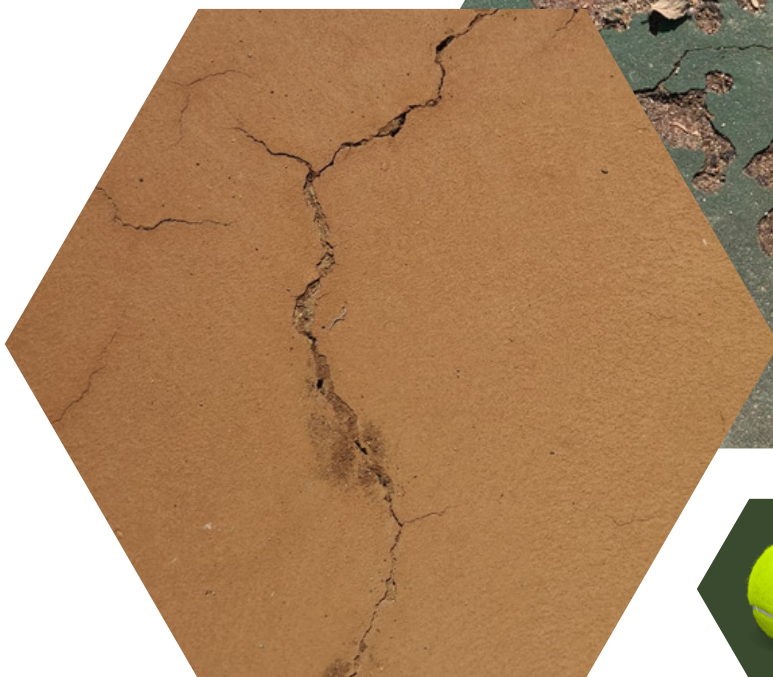
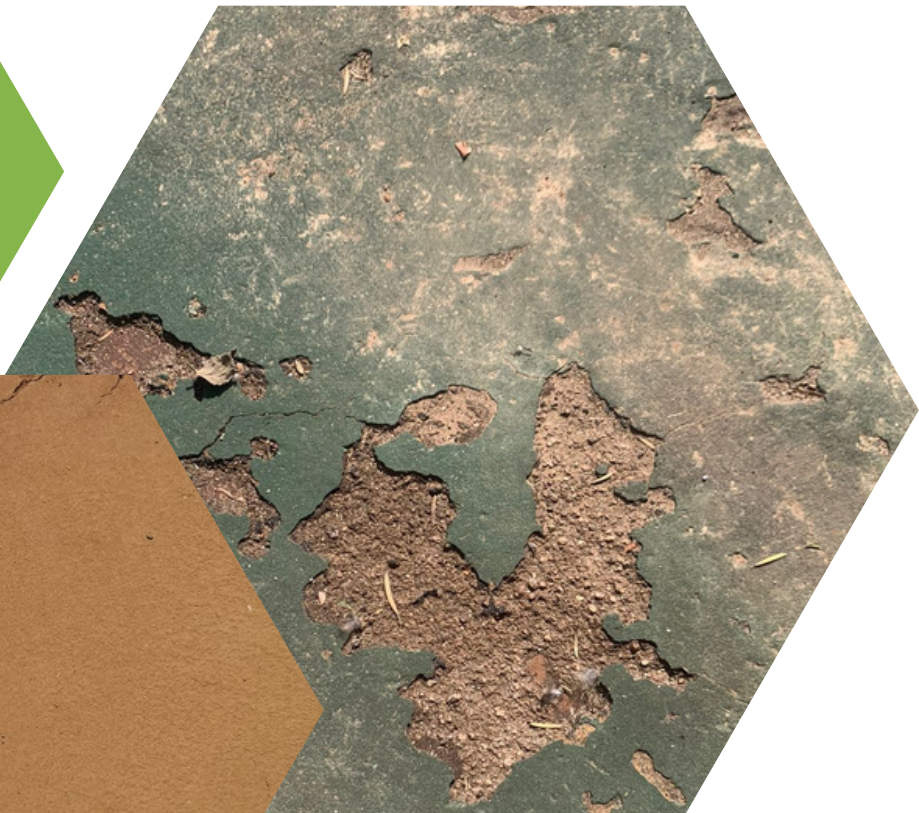
Court Maintenance

Resurfacing & Crack repairs

Every few years courts need to be resurfaced. Courts that have been left for too long before resurfacing may require an additional bitumen screed or slurry layer to avoid any cracks resurfacing.

The soil movements below the court or tree roots may result in cracks appearing and it tends to happen in most tennis courts over time. Although hairline cracks are natural and not a major cause for concern it is good to monitor these cracks. If they keep widening it is best to do crack filling and sealing to avoid water damage below the court.

Resurfacing is recommended every 4-5 years depending on use and weather conditions and generally apply to the acrylic polymer layers that



Botha Courts
Tennis | Netball | Padel
Est. 1992

COURT SERVICE

Tennis Court services



New Court construction



Court Resurfacing



Fencing & Flood Lights



Crack repair and patching



Speed and spin control wash coats



BothaCourts
Tennis | Netball | Padel
Est. 1992

OTHER COURTS

Other courts



Netball / Basketball Court construction



Netball / Basketball Court Resurfacing



Pickleball courts



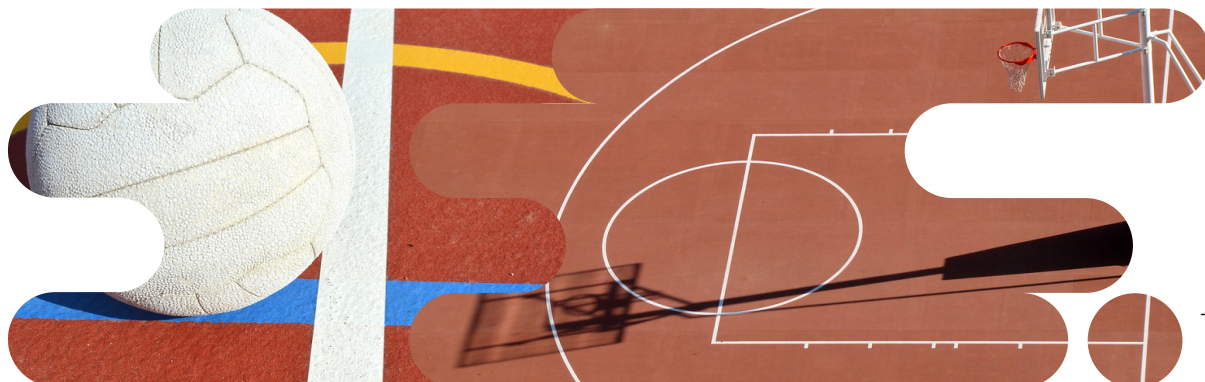
Padel Court construction

Request our detailed Padel Brochure for more detail and costs

To request and assesment or quotation contact us:

Lehan Botha 083 462 0209

info@bothacourts.co.za



BothaCourts
Tennis | Netball | Padel
Est. 1992